





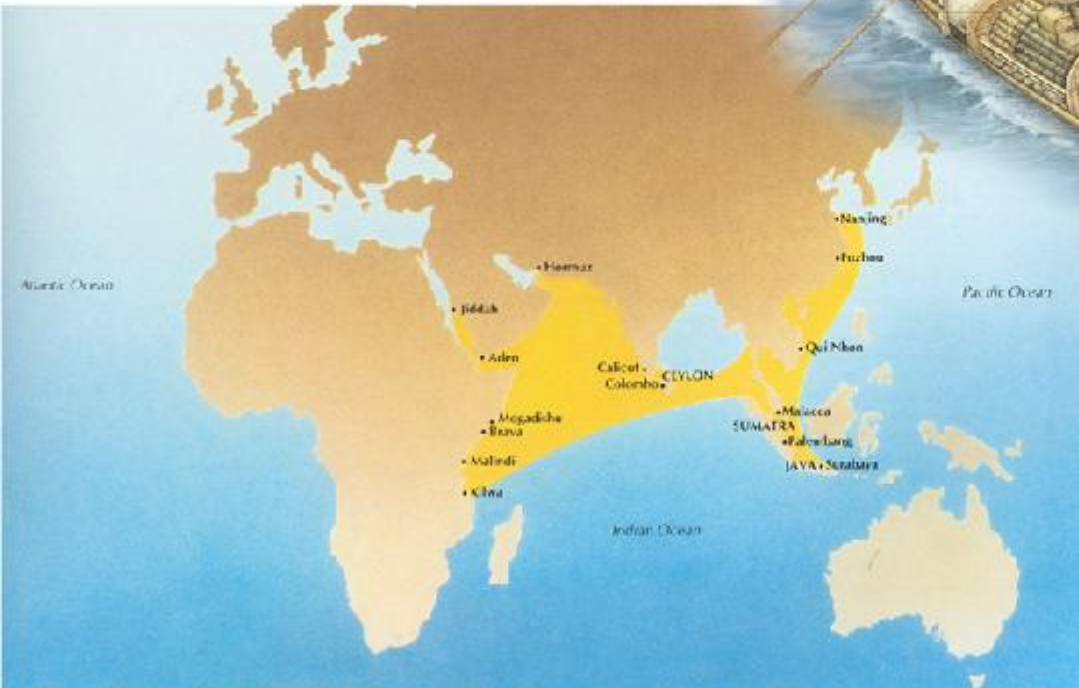
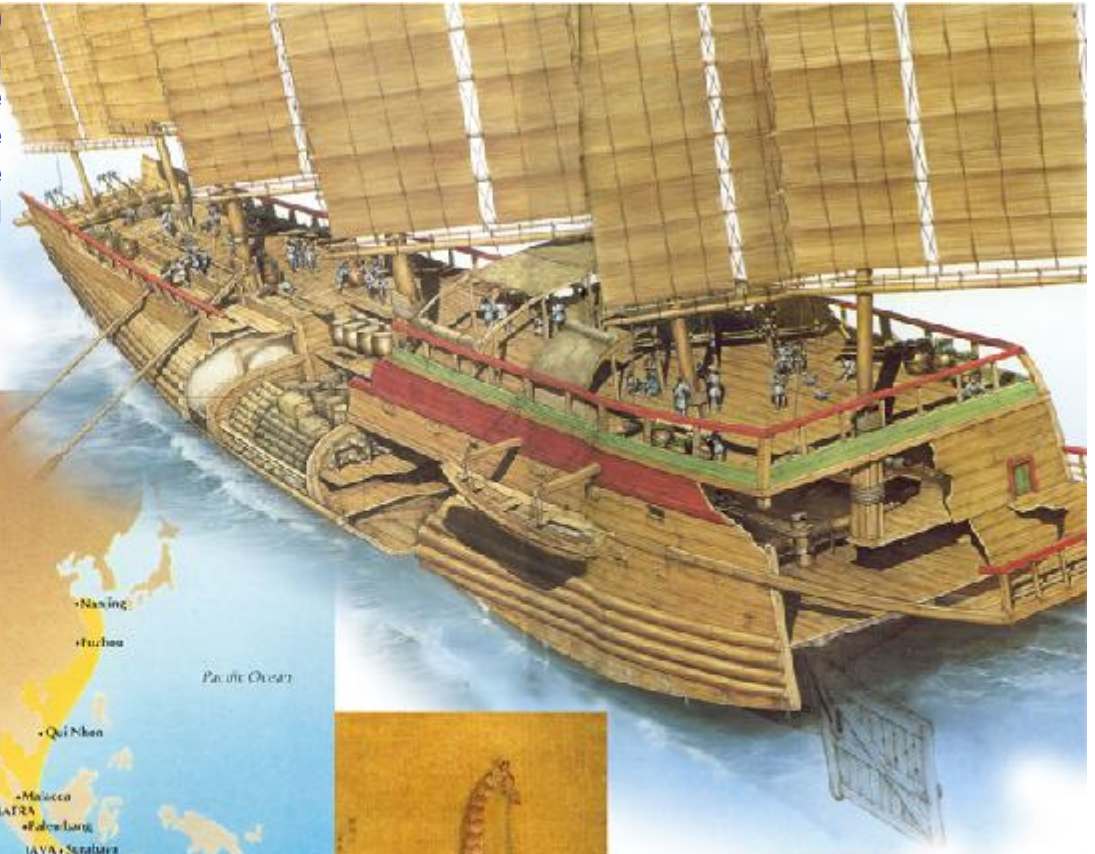




RAJ ANGAN

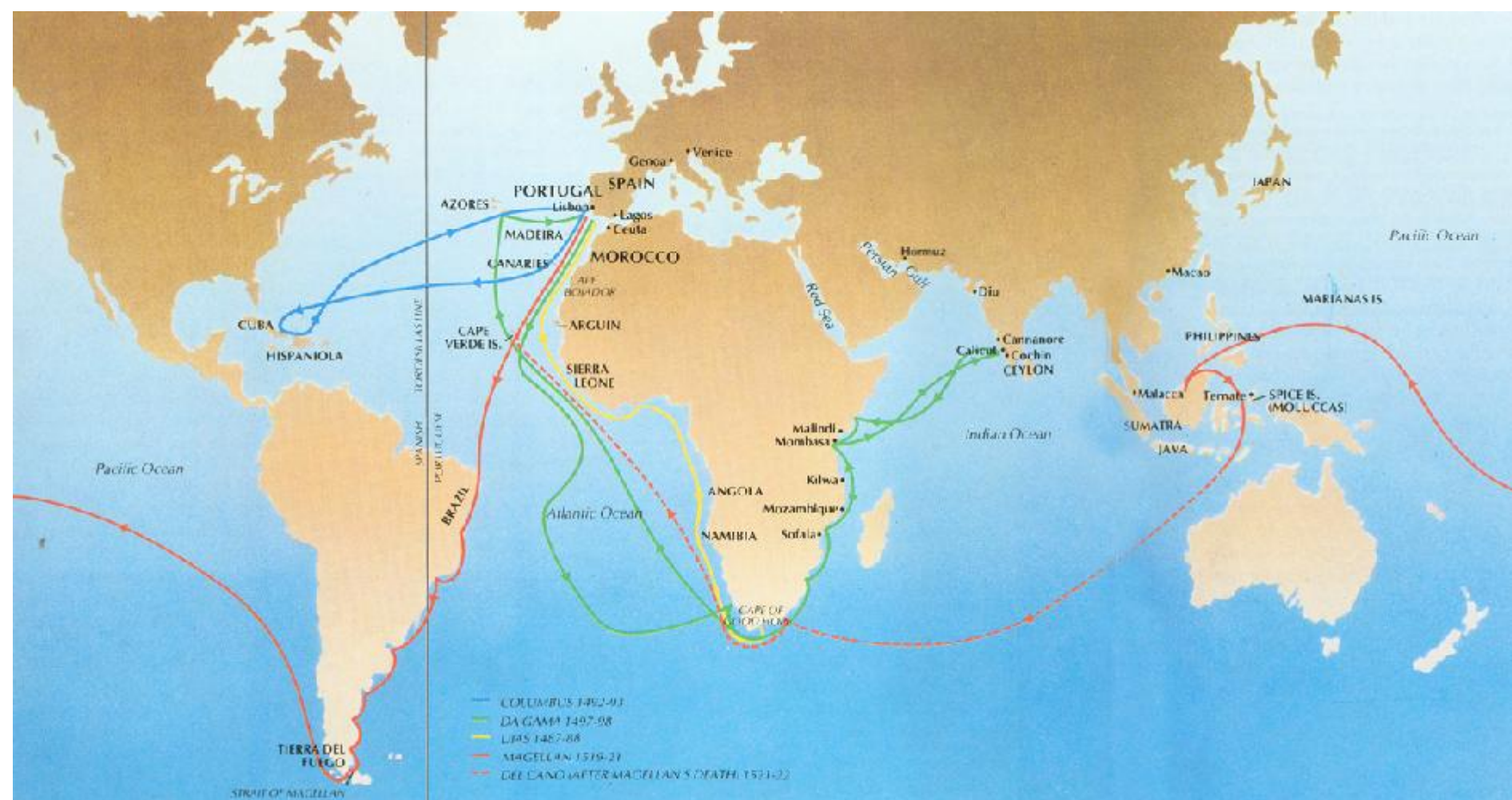


Zheng was a brilliant Admiral and on the orders of Chinese Emperor Yongle took a fleet of 62 large junks and over 100 smaller ships to India in 1405. Later expeditions between 1407 and 1433 led to contacts with 40 countries around the Indian Ocean. On Zheng's 4th expedition he took a Giraffe as a gift from the Sultan of Malindi (Kenya) to the Chinese Emperor which is depicted in the painting on silk. He visited Anjadiv.



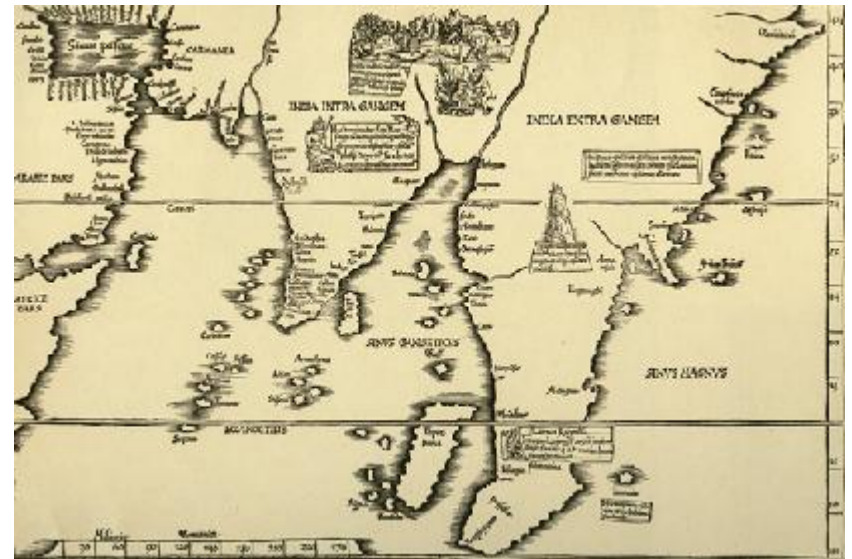
Zheng's vessels displaced up to 1500 tonnes and were 135 meters in length and were the largest ships built up to that time.

EXPLORERS FROM THE EAST





THE WORLD ACCORDING TO PTOLEMY - 1486



MAP OF INDIA - MARTIN WELDSEMULLER (1513)



BIBLICALLY INSPIRED MAP OF THE 15th CENTURY



PORTUGUESE ASTROLABLE (15th CENTURY)

CHARTING THE WORLD



Prince Henry - 'The Navigator'



Vasco-da-Gama

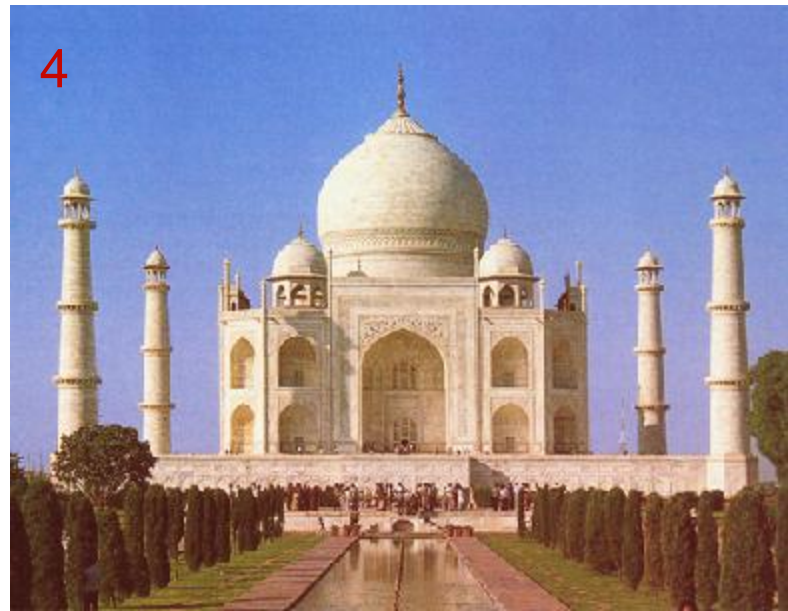
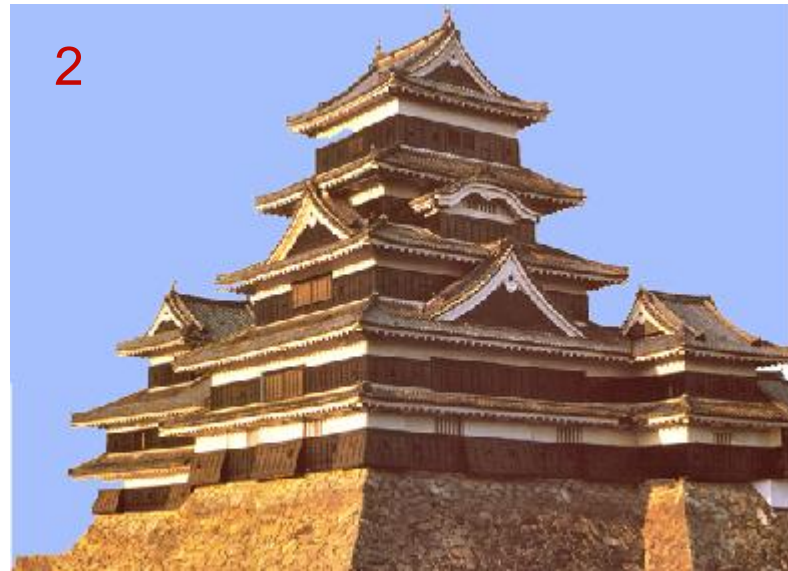


The Fleet of Vasco-da-Gama



The Caravel





1. Mosque of Sultan Selim II
- Edirne(Turkey)

2. Matsumoto Castle (Japan)

3. St.Basil Cathedral – Moscow
(Russia)

4.Taj Mahal - Agra (India)



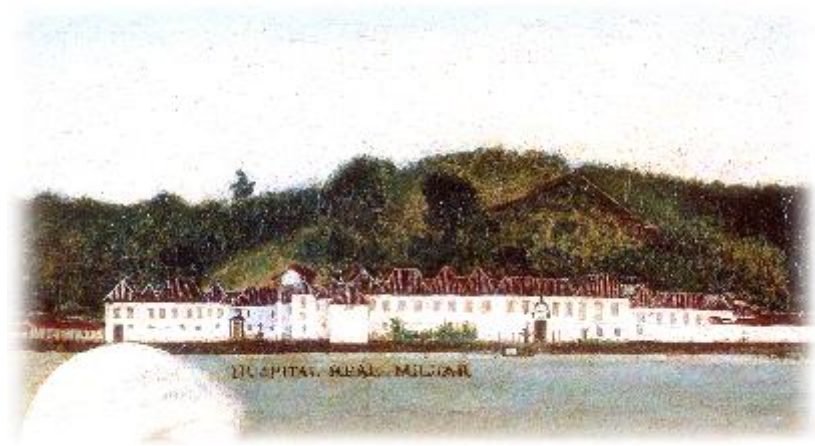
Palacio de Recreio dos Arcebispos, San Pedro - late 18th century.
Alpoim Galvao Collection



Paco de Daugim - late 16th century. Alpoim Galvao
Collection



Palacio Real de Santos - 16th century. British Museum



Palacio da Casa da Polvora - late 18th century . Alpoim Galvao
Collection

GOAN HOUSES EARLY VIEWS





OLD GOA - 1638



PIRATES OFF THE COAST - (EARLY 16TH CENTURY)



EMMISARY OF SULTAN MAHMUD OF GUJRAT (BIBLIOTECA CASANATESE, 16TH CENTURY, ROME)

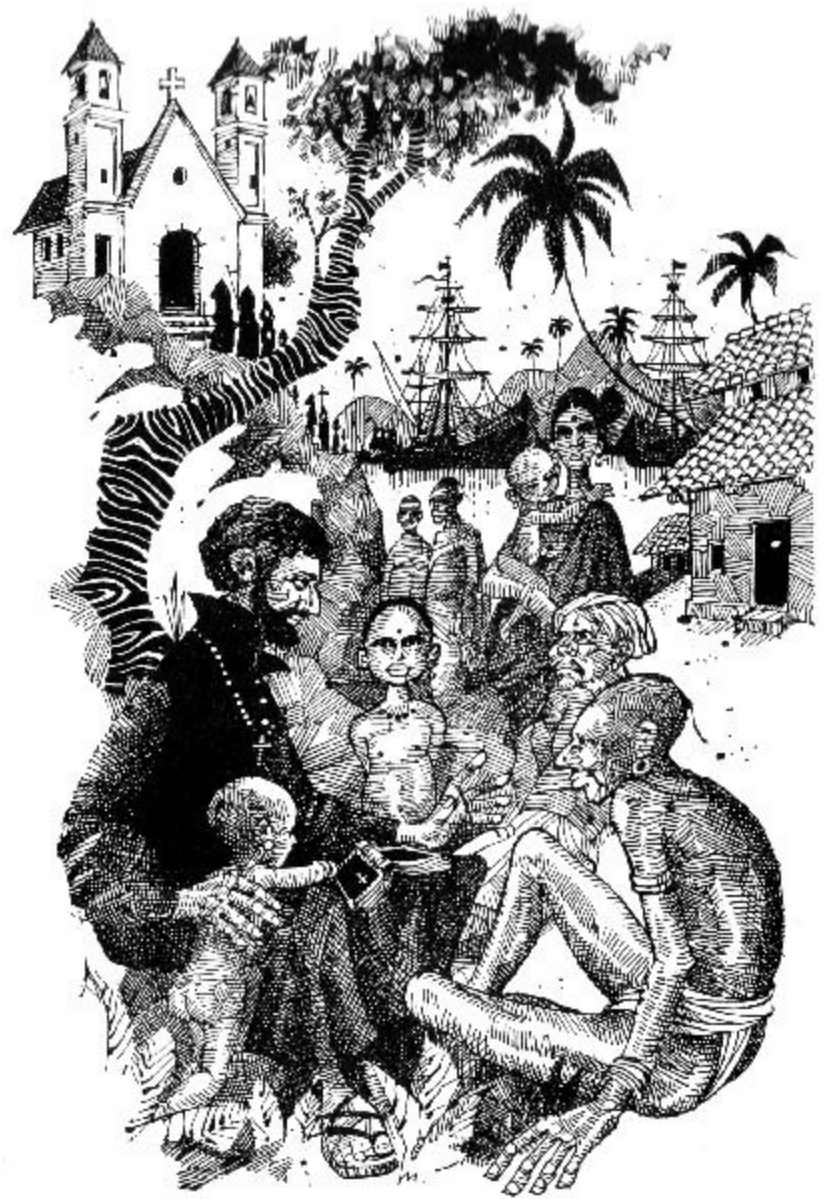
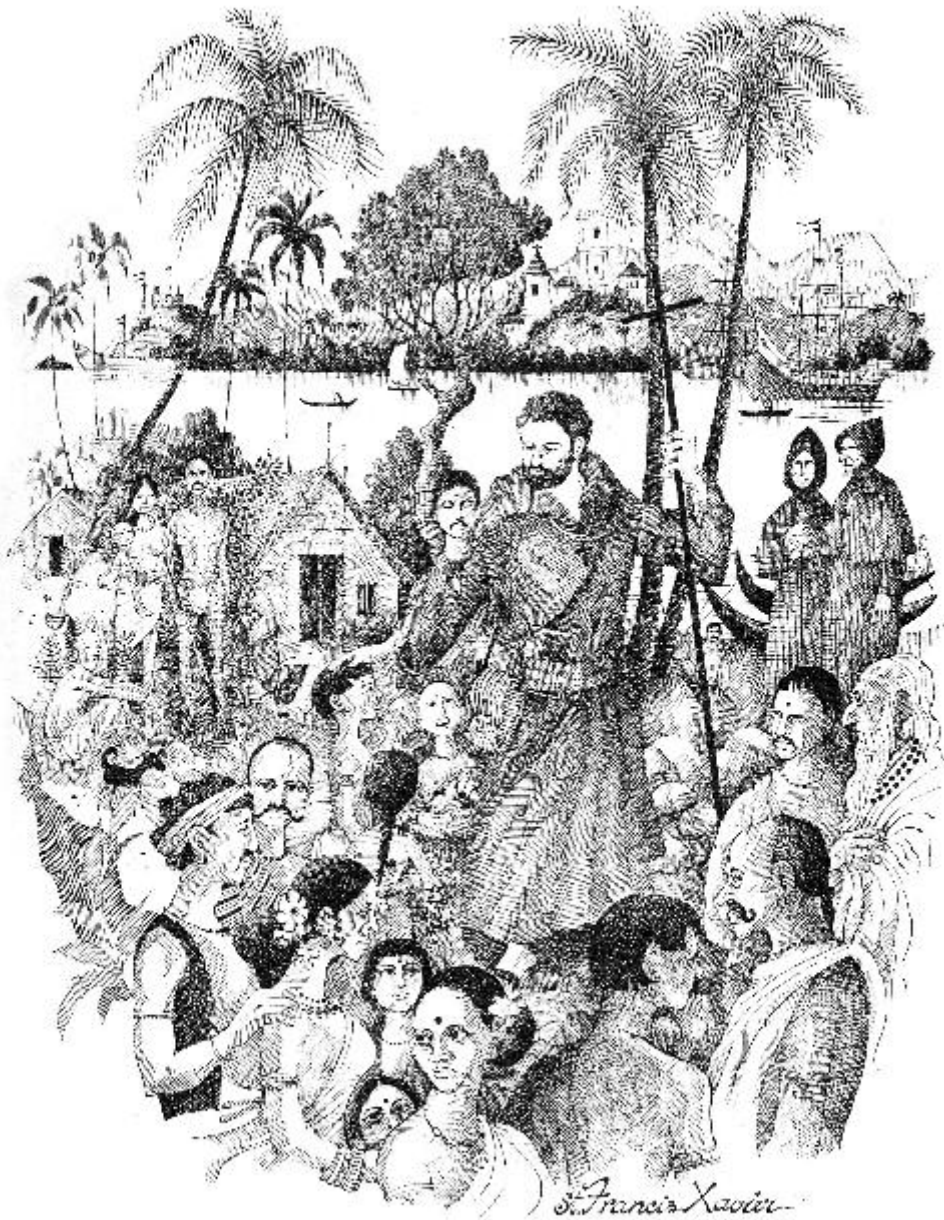


MONEY CHANGER – (EARLY 16TH CENTURY)



FIDALGO – (BIBLIOTECA CASANATESE, 16TH CENTURY, ROME)

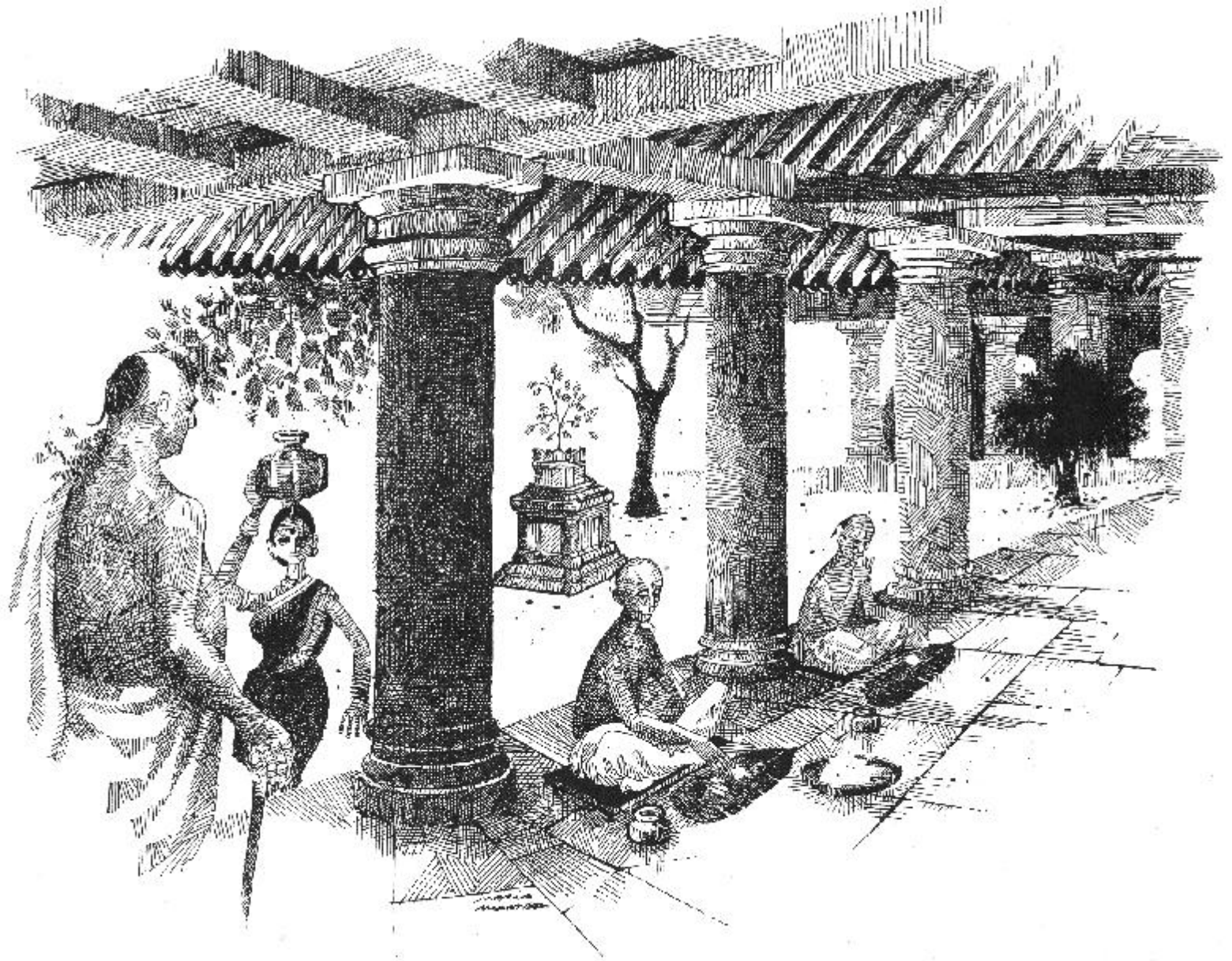
EARLY VIEWS



St. Francis Xavier
1506-1552





















EARLY CONQUESTS



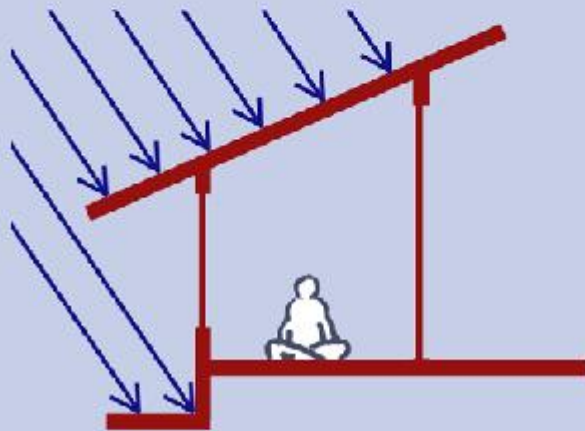
1510-1543 AD

- Forts built by the Portuguese
- Relocated Temples -1545-70

KEY TO HANDLE GOA'S CLIMATE



Good ventilations at body level help fight the heat and humidity



Protection from the fierce monsoons



CLIMATE AND ARCHITECTURE



BRICKS

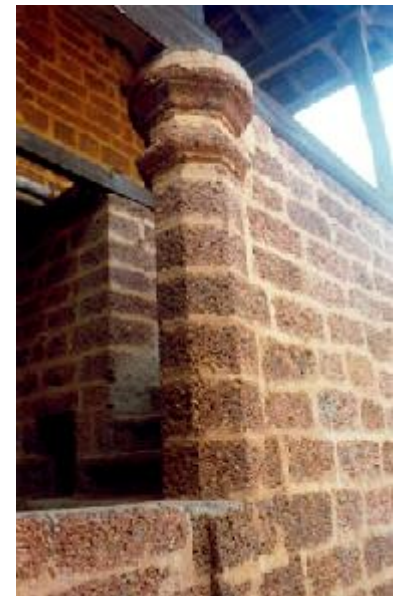


RUBBLE



DRESSING

LATERITE



STONE WALL



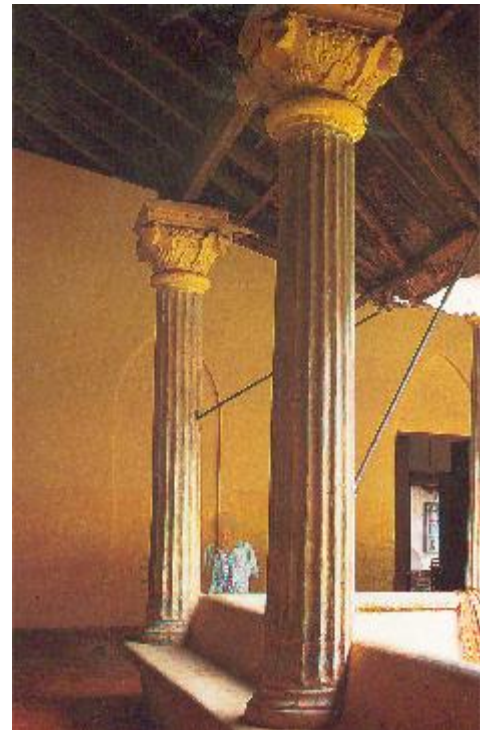
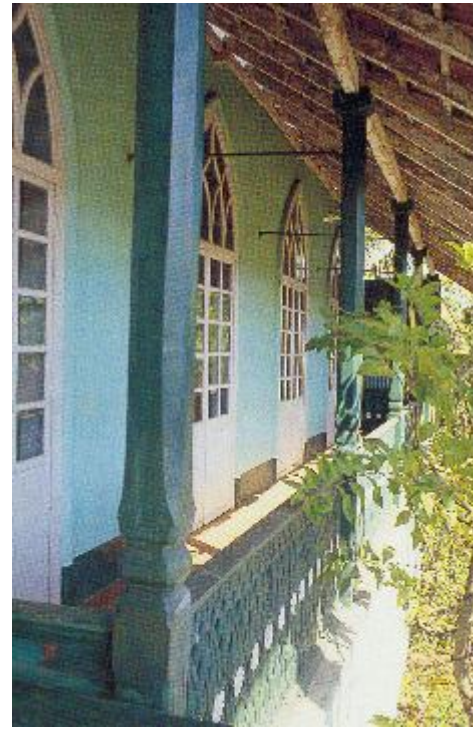
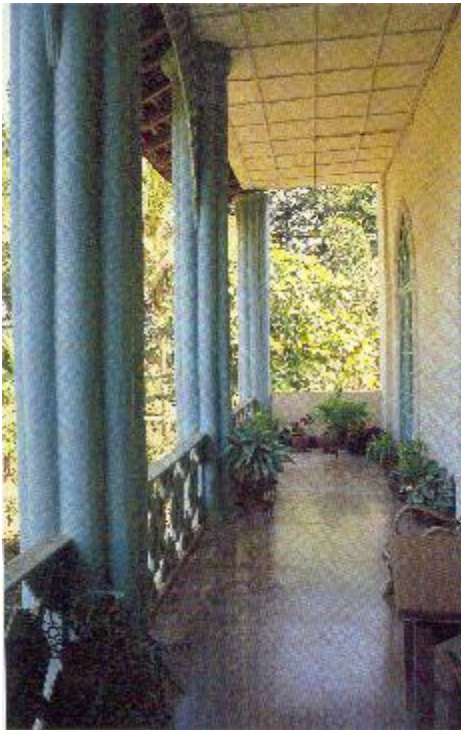
THE BALCAO



GATEPOSTS







COLUMNS



EARLY 20th CENTURY FLOORS



CHINA MOSAIC



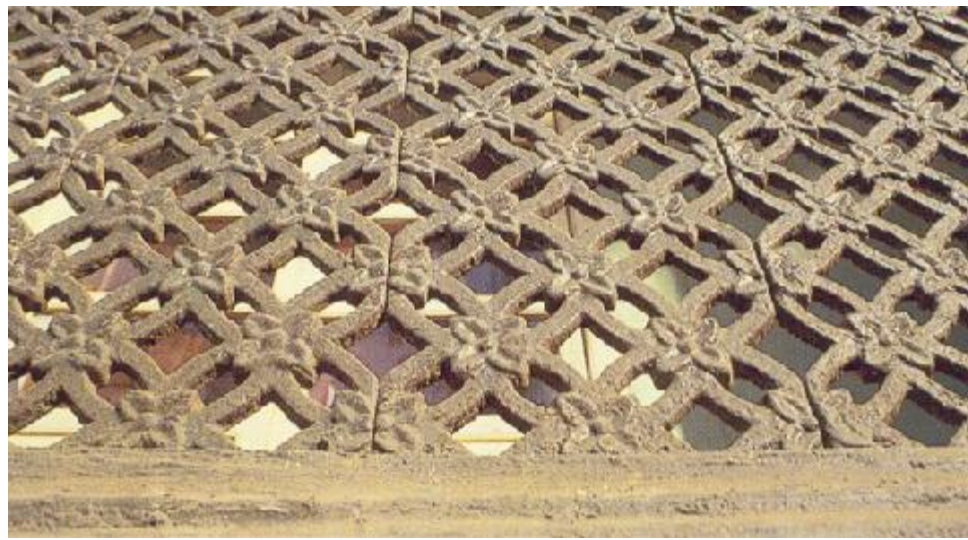
STONE



CAST IRON



WOOD



WOOD

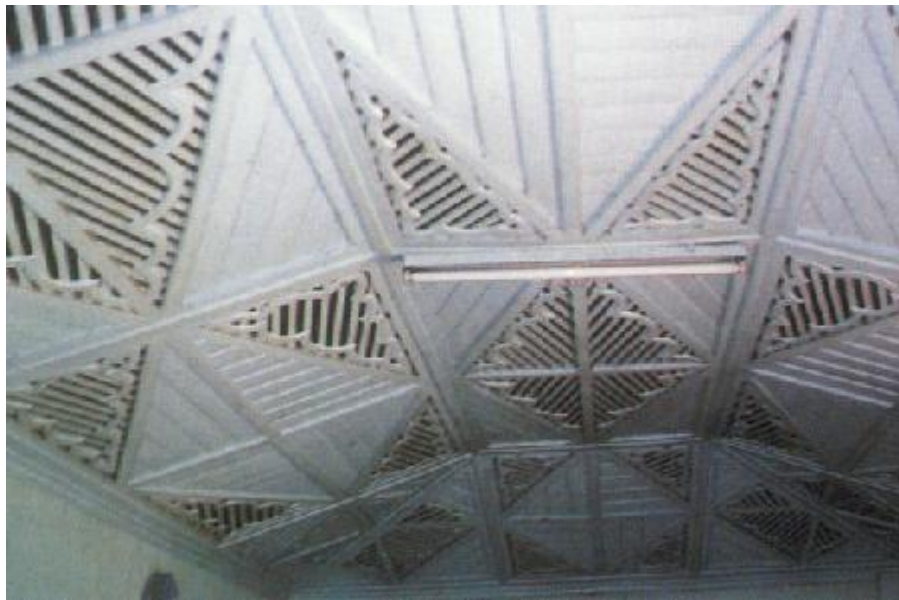
RAILINGS



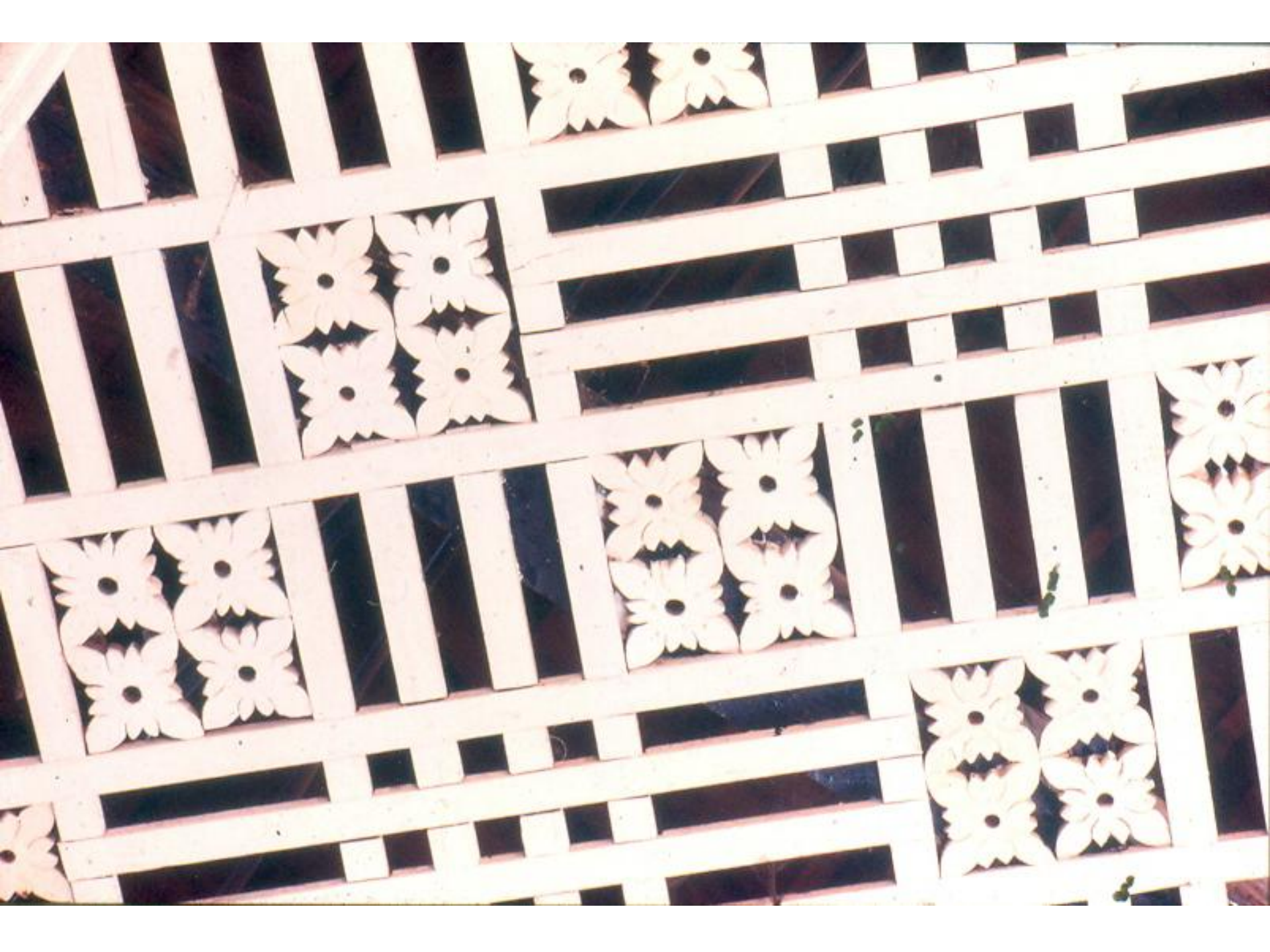








FALSE CEILING





UPHOLSTERED SOFA



TEAK AND CANE LOVE SEAT



CADEIRA DE BRACOS



COUNCIL CHAIR



CONTADOR-TEAK INLAYED WITH EBONY

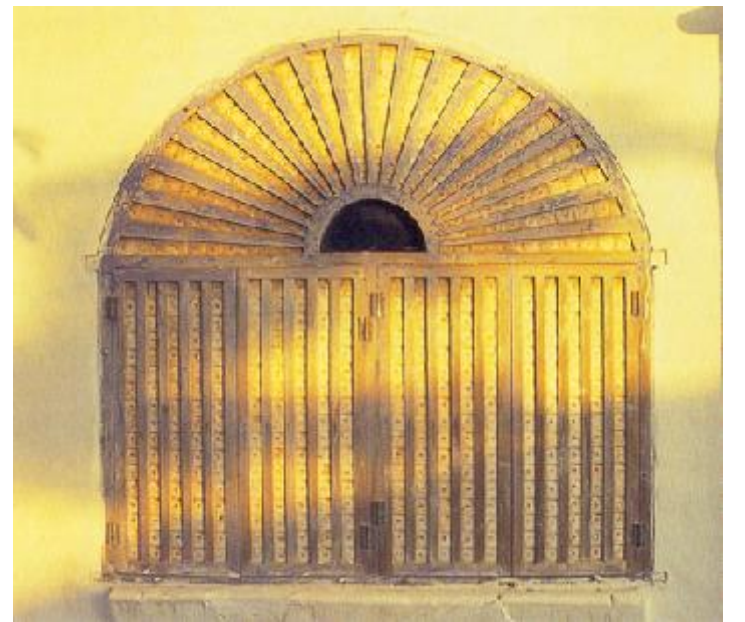


CORNER CHAIR

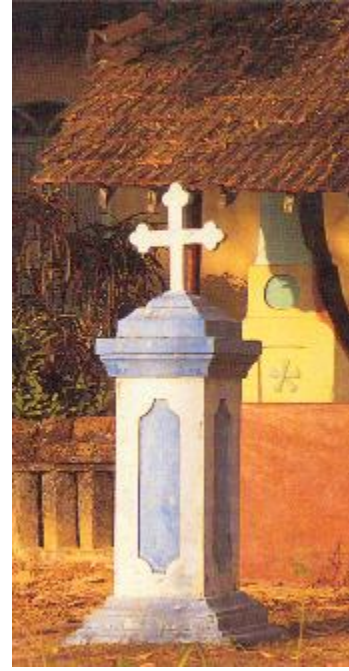
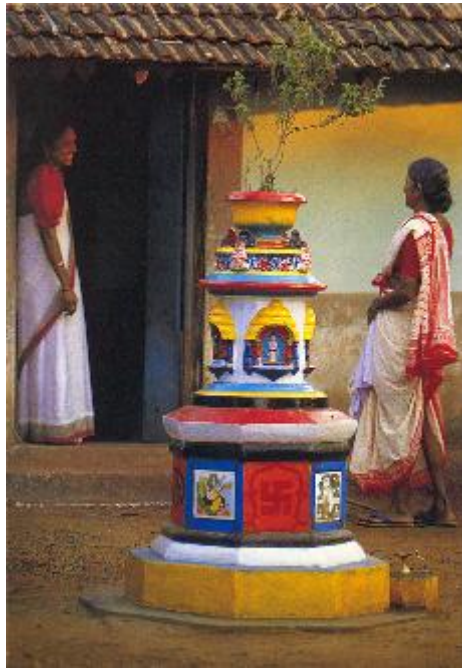
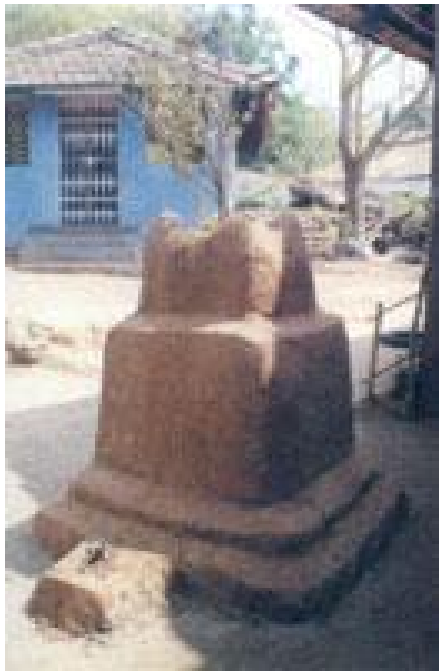
INDO-PORTUGUESE FURNITURE



FRESCOES



OYSTER SHELL



TULSIS AND CROSSES



